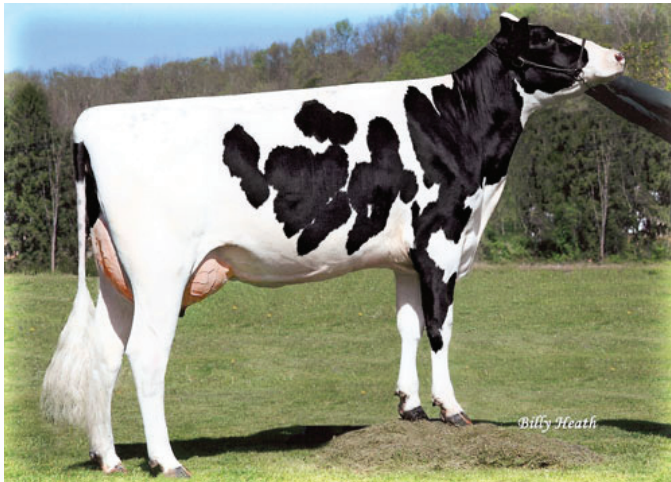




MGD: MS Heartbeat JM Maggie Mae



Dam: Foxberry Stream Myra 619

PEDIGREE

Sire: Seagull-Bay Supersire-ET TV TL TY TD
Dam: Foxberry Stream Myra 619-ET VG-86
 02-02 3x 365d 30750m 3.9 1204f 3.0 935p
MGS: Applouis Jet Stream-ET TV TL VG-87
MGD: MS Heartbeat JM Maggie Mae TV TL EX-92 2E
 GMD DOM
 02-11 2x 365d 37070m 5.1 1887f 3.1 1136p
MGGS: Comestar Outside-ET TV TL EX-95
MGGD: Heartbeat Rudolph Maggie EX-94 2E
 07-06 2x 365d 39250m 4.0 1589f 3.2 1258p

CDCB GENOMIC - SIRE EVALUATIONS (04/2017)

Milk	1732	79%R	0 Dtrs	0 Herds	100% US
Fat	69	0.01%			
Protein	50	0.00%	EFI 7.1%		GFI 8.3%
PL	4.2	77%R	Net Merit \$		612
SCS	3.2	74%R	Fluid Merit \$		632
DPR	0.9	73%R	Cheese Merit \$		603
HCR	2.7		Grazing Merit \$		580
CCR	3.1		SCR		

CDCB CALVING TRAIT EVALUATIONS (04/2017)

Sire Calving Ease	9.80%	95%R	883 Obs
Daughter Calving Ease	5.40%	66%R	0 Obs
Sire Stillbirth	6.40%	88%R	739 Obs
Daughter Stillbirth	4.60%	61%R	0 Obs

CDCB GENOMIC - SIRE EVALUATIONS (04/2017)

PTAT +2.06 78%R		UDC +1.88 FLC +0.77 0 Dtrs 0 Herds		TPI +2453
Stature	○○○○○○○○○○●●●●●●●●●●	2.88	Tall	
Strength	○○○○○○○○○○●●●●●●●●●●	1.67	Strong	
Body Depth	○○○○○○○○○○●●●●●●●●●●	1.43	Deep	
Dairy Form	○○○○○○○○○○●●●●●●●●●●	1.28	Open Rib	
Rump Angle	○○○○○○○○○○●●○○○○○○○○	0.43	Sloped	
Thurl Width	○○○○○○○○○○●●●●●●●●●●	1.45	Wide	
Rear Legs-Side View	○○○○○○○○○○●○○○○○○○○○○	0.27	Sickle	
Rear Legs-Rear View	○○○○○○○○○○●●●●●●●●●●	0.6	Straight	
Foot Angle	○○○○○○○○○○●●●●●●●●●●	0.99	Steep	
Feet & Legs Score	○○○○○○○○○○●●●●●●●●●●	0.88	High	
F. Udder Attachment	○○○○○○○○○○●●●●●●●●●●	1.48	Strong	
Rear Udder Height	○○○○○○○○○○●●●●●●●●●●	2.86	High	
Rear Udder Width	○○○○○○○○○○●●●●●●●●●●	2.63	Wide	
Udder Cleft	○○○○○○○○○○●●●●●●●●●●	1.43	Strong	
Udder Depth	○○○○○○○○○○●●●●●●●●●●	2.06	Shallow	
Front Teat Placement	○○○○○○○○○○●●●●●●○○○○	0.75	Close	
Rear Teat Placement	○○○○○○○○○○●●●●●●●●●●	1.2	Close	
Teat Length	○○○○○○○○○○●●○○○○○○○○	0.37	Long	
	-2 -1 0 1 2			



www.globalagalliance.com
 For more information email:
info@globalagalliance.com